



ROAD MAP TO COMPLETION

Board of Education

Facilities Study Session

February 14, 2012

Measure Y and Measure A Bonds: Commitment to Our Community

- Where we have been? (Retrospective)
- Where are we now? (Current Projects)
- Where are we going? (Future Projects)



Milestones To Excellence

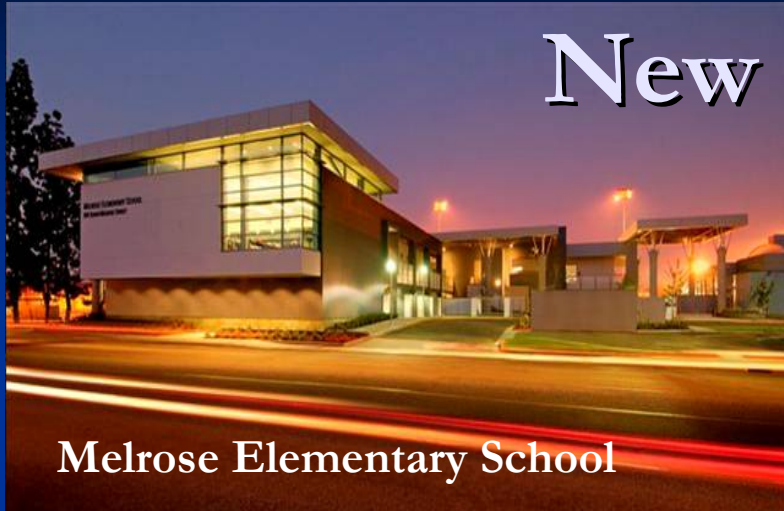


Commitment to Our Community: Where have we been?

- Measure Y Accomplishments
 - 2 New Elementary Schools
 - 1 New Middle School
 - 1 New Comprehensive High School
 - 25 Modernizations
 - Parking Lots/Playgrounds

Where Have We Been?

New Schools



Melrose Elementary School



Valadez Middle School



Lakeview Elementary School

LPA

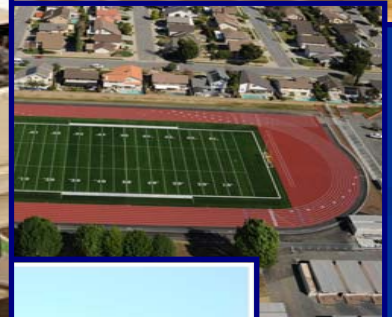


Yorba Linda High School

Where Have We Been? Measure Y



Where Have We Been? Measure A Retrospective



Where Are We Now?

Current Measure A Funding Status

Total Measure A Bond Amount:	\$200,000,000.00
State Funding Received:	\$9,905,044.00
Anticipated State Funding : (March 2012)	\$2,094,956.00
<u>Bond Interest:</u>	<u>\$3,500,000.00</u>
Total Measure A Funds:	\$215,500,000.00
Total Expended Measure A Funds:	\$174,900,000.00
<u>Total Budgeted Measure A Funds:</u>	<u>\$40,600,000.00</u>
	\$215,500,000.00

Where Are We Now: Current Projects

- Total Budgeted Measure A Funds: \$40,600,000
- Remaining Projects:
 - El Camino Modernization (Construction)
 - District Performing Arts Center (Anticipated Start March 2012)
 - Tennis Court Relocation (Construction)
 - Parking Lot Expansion and Modular Relocation (Construction)
 - Valencia Projects (Programming/Design Phase)
 - Bradford Stadium Concession Modernization
 - Permanent Science Modular Building
 - 300 Building Modernization
 - North Campus Concrete Replacement
 - 200 Modulares to Permanent Foundations
 - Orchestra/Dance Room

Where Are We Now?

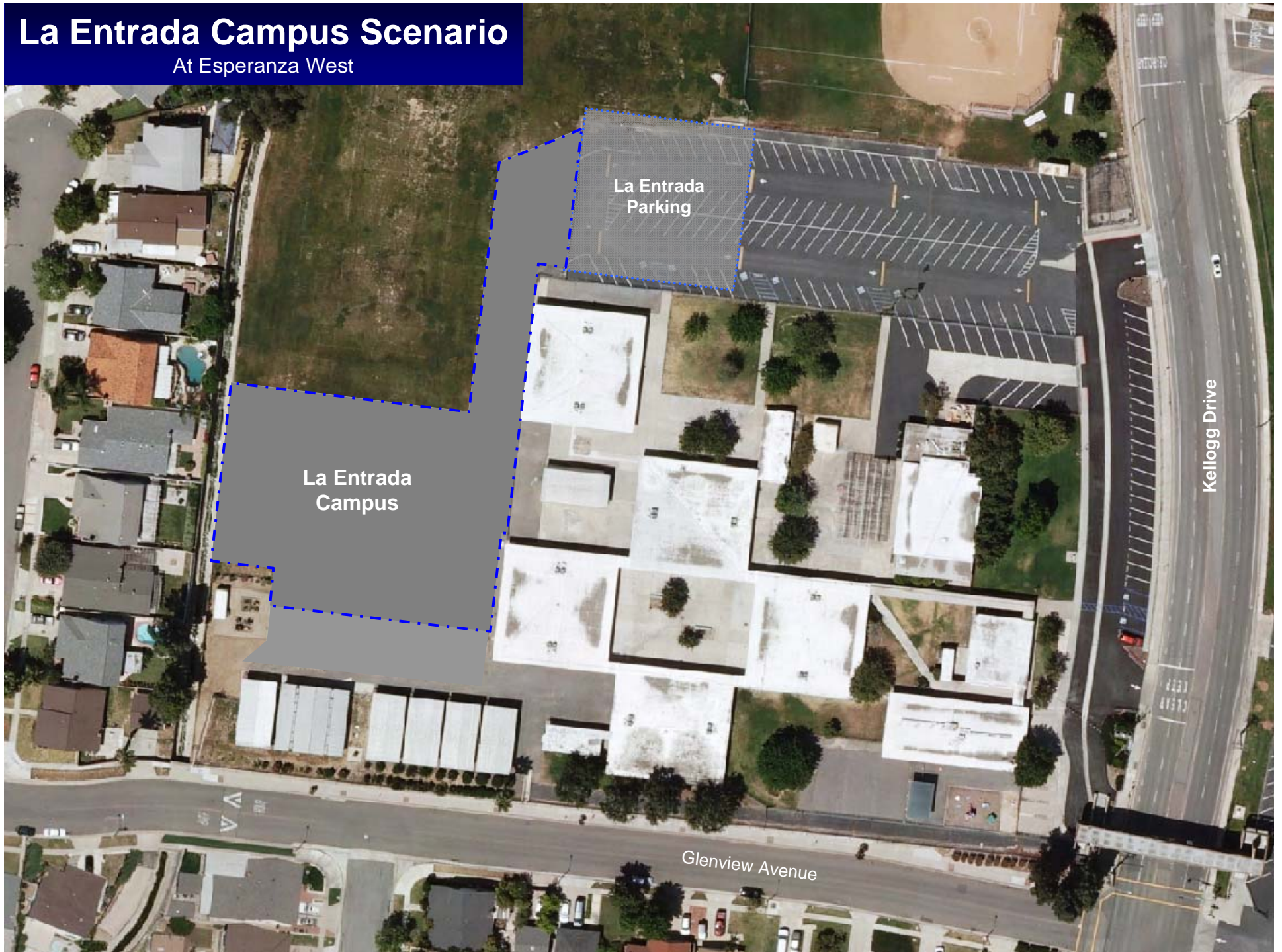
Current Projects

Remaining Projects Continued

- Mabel Paine Lunch Shelter/MPR Upgrades (Design)
- Rose Drive Lunch Shelter/MPR Upgrades (Design)
- Travis Ranch Upper Food Service Modernize Modular (Programming/Design)
- Travis Ranch Modernization Phase I: HVAC Upgrades (Programming)

La Entrada Campus Scenario

At Esperanza West



Where Are We Now ?

Current Projects

- Anticipated State Funding \$2,094,956.00
(March 2012)
 - Wagner Library/Media Center (Design)
 - Valencia Auditorium Phase 2: HVAC Upgrades
(Programming/Design)

Where Are We Going ?

Future Capital Facilities Projects

(Based on Eligible Projects and Anticipated Future State Funding)

Future State Funds: \$11,500,000.00

Travis Ranch Modernization

Mabel Paine MPR Expansion

Rose Drive MPR Expansion

Valencia HS Auditorium Interior Modernization

Valencia HS Auditorium Expansion

DISTRICT PERFORMING ARTS CENTER AT EL DORADO

Schematic Design Approval
August 2009

Design Development Approval
November 2009

Construction Document Approval
October 2010

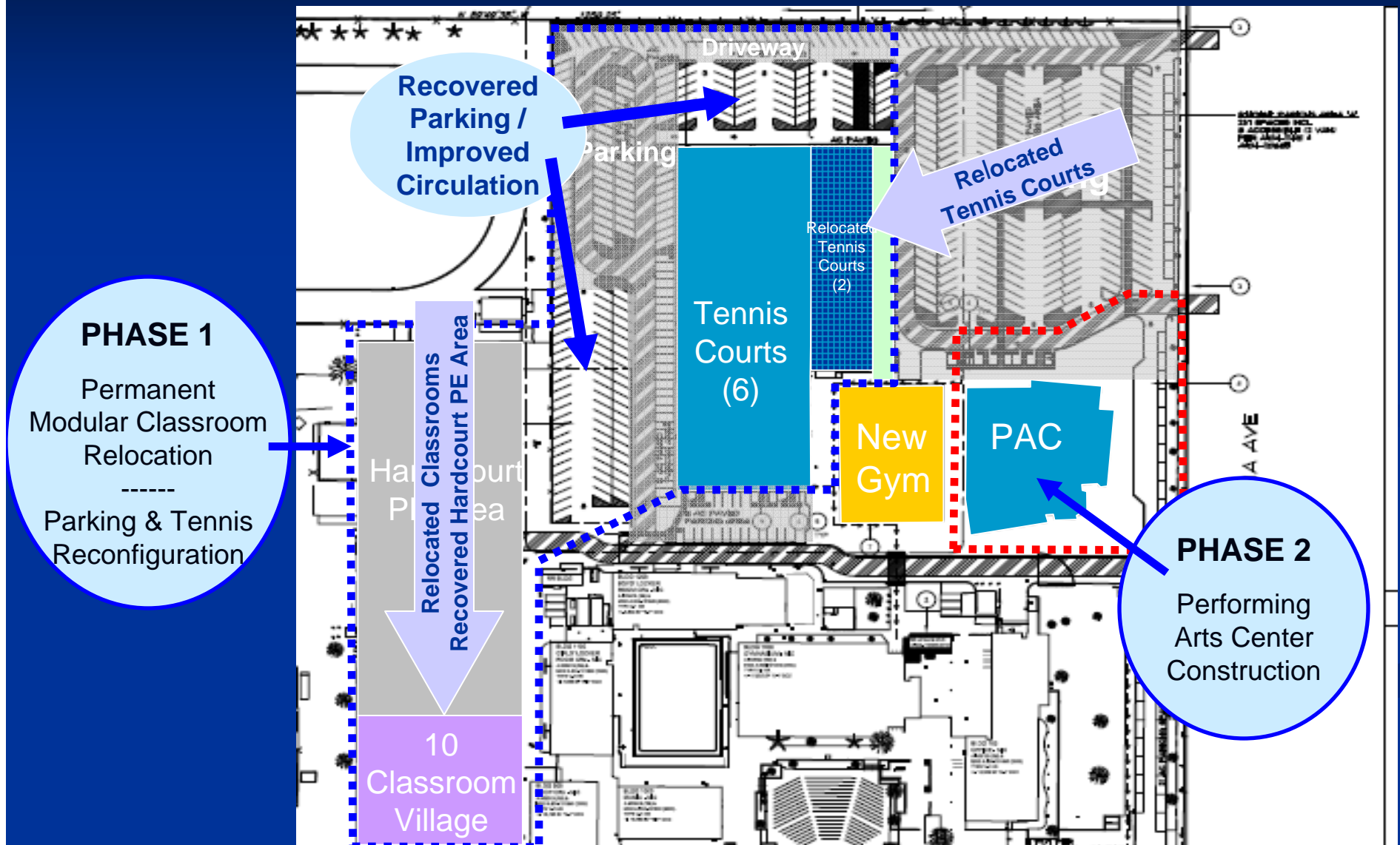
Anticipated Approval of LLB
Contract
February 2012

Start of Construction
March 2012

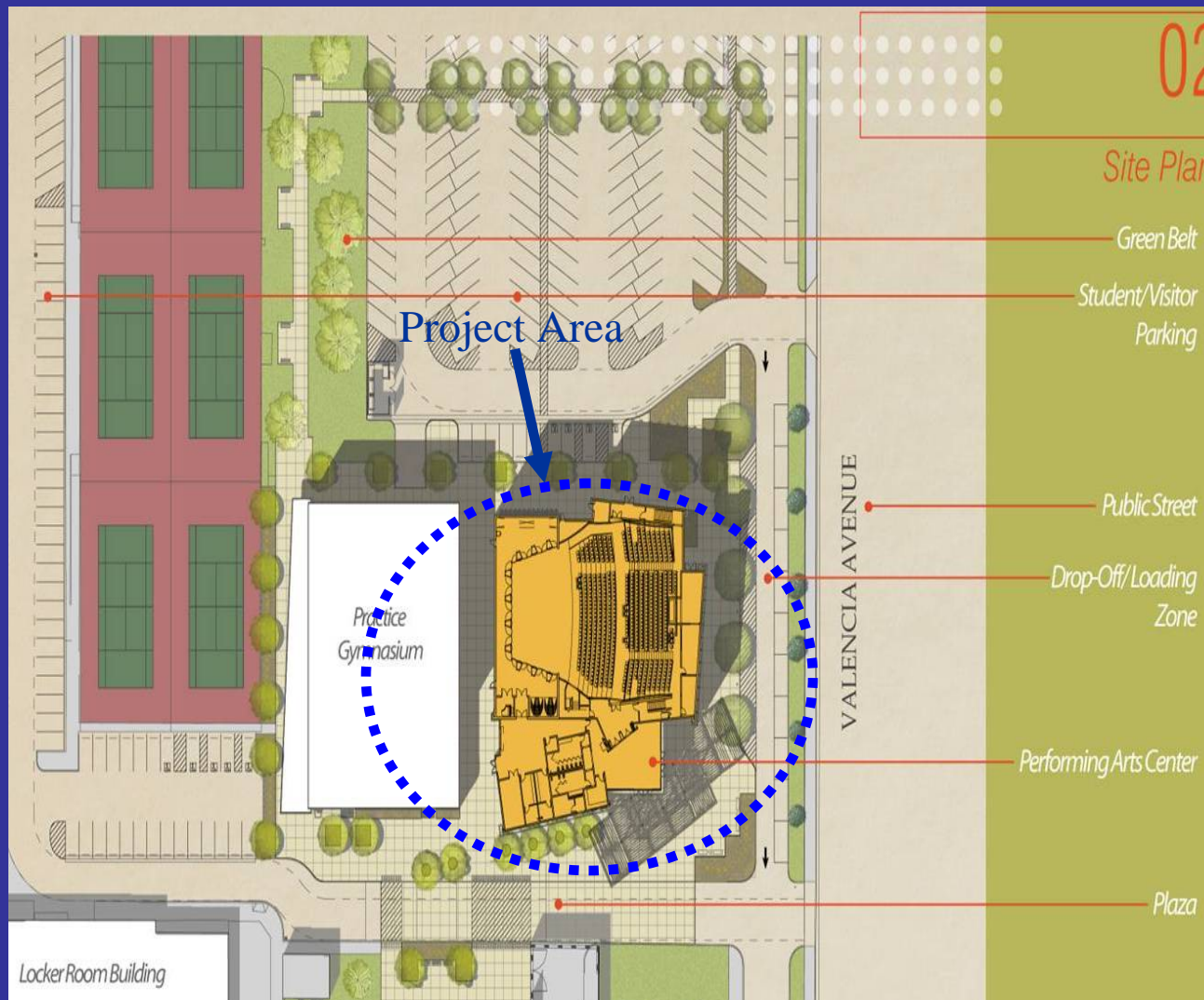


El Dorado Campus Improvements

District Performing Arts Center



Performing Arts Center – Site Plan



Project Time
Line:

Start of
Construction:
March 2012

Anticipated
Completion:
June 2013

Performing Arts Center – Floor Plan

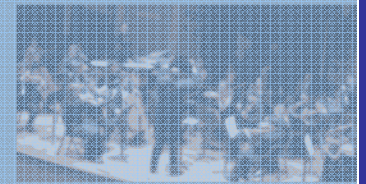
House Capacity: Approximately 610 Seats

Stage performance area accommodates the following ensemble combinations

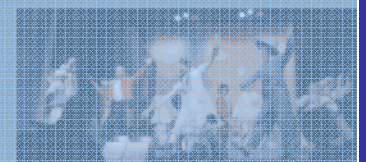
- a. 125 musicians
- b. 70 musicians + 100 choir members = 170
- c. 230 choir members

FLOOR PLAN

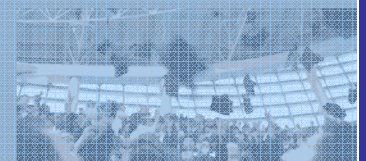
- LOBBY/FOYER
- STAGE
- HOUSE/AUDITORIUM
- AUDIO/VISUAL
- STAGE SUPPORT AREA
- CIRCULATION/ACCESSORY



CONCERT



THEATRE



CEREMONY

Perf. Arts Center – Exterior Elevation



Main Entrance

Perf. Arts Center – Exterior Elevation



East Elevation from Valencia Avenue

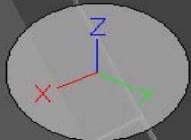
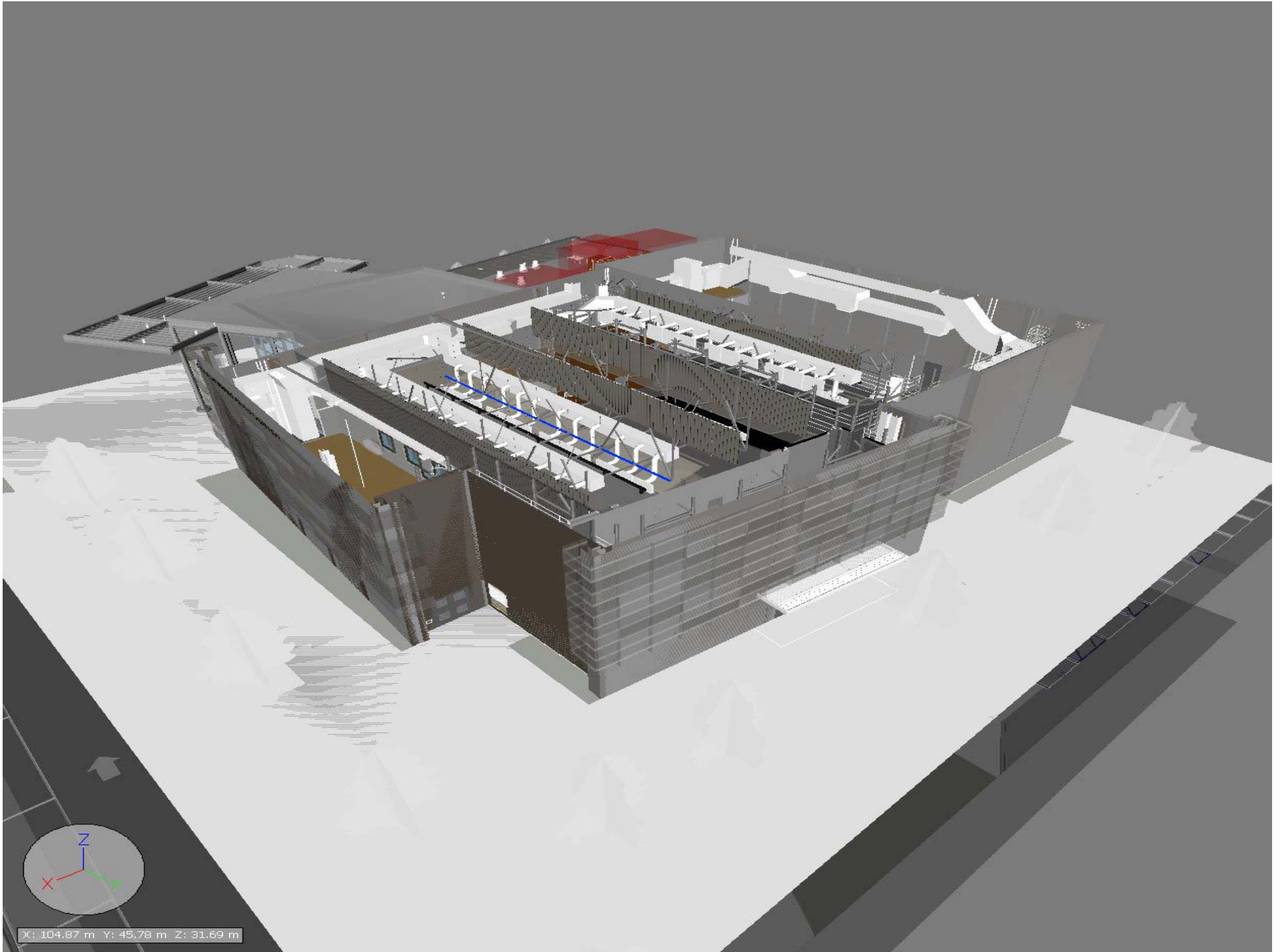


Perf. Arts Center – Exterior Elevation



South Elevation From Campus Quad





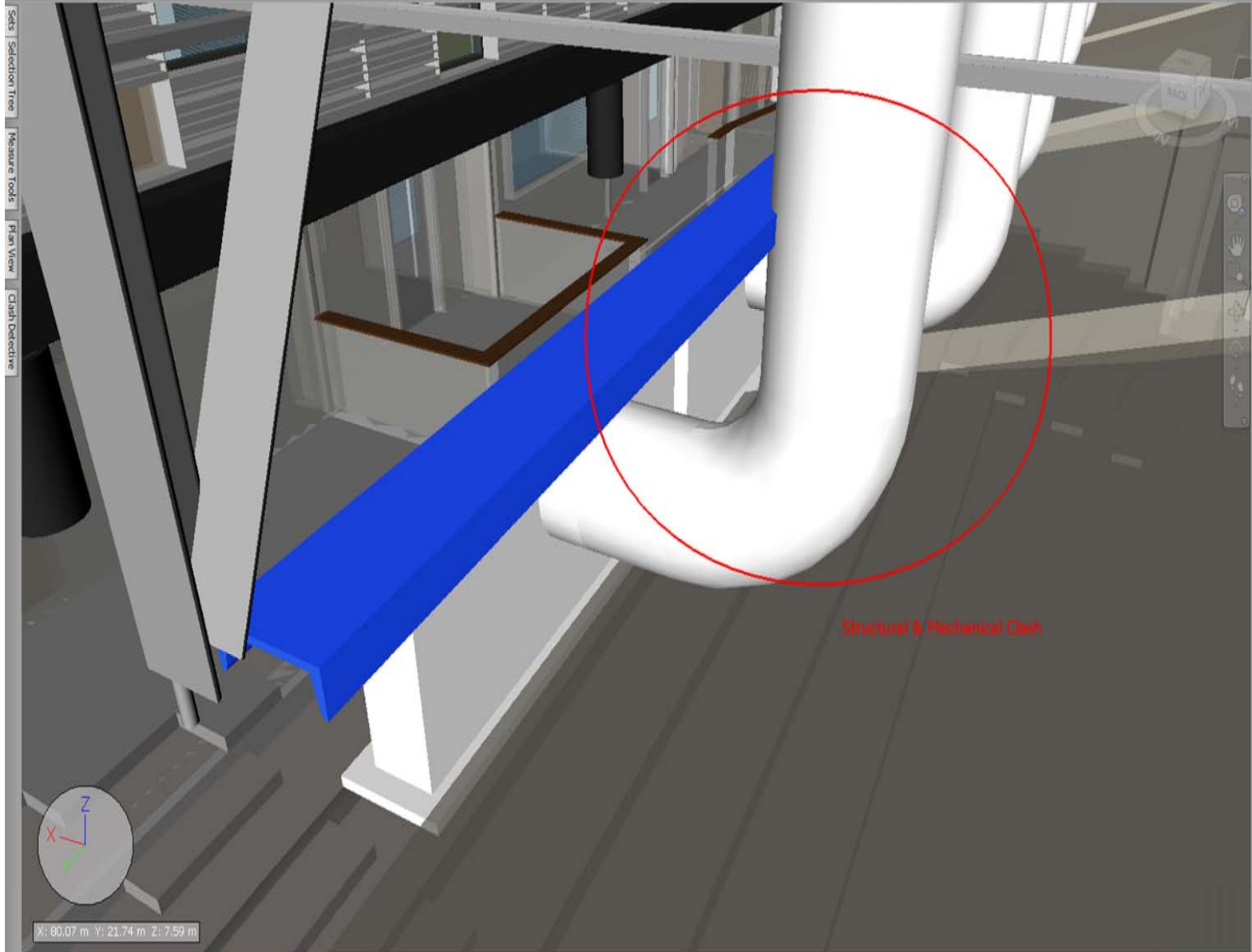
X: 104.87 m Y: 45.78 m Z: 31.69 m

Home Viewpoint Review Animation View Output Item Tools Sectioning Tools

Measure Shortest Convert Clear Text Draw Erase Color Thickness: 3 Add Tag View Comments Find Comments

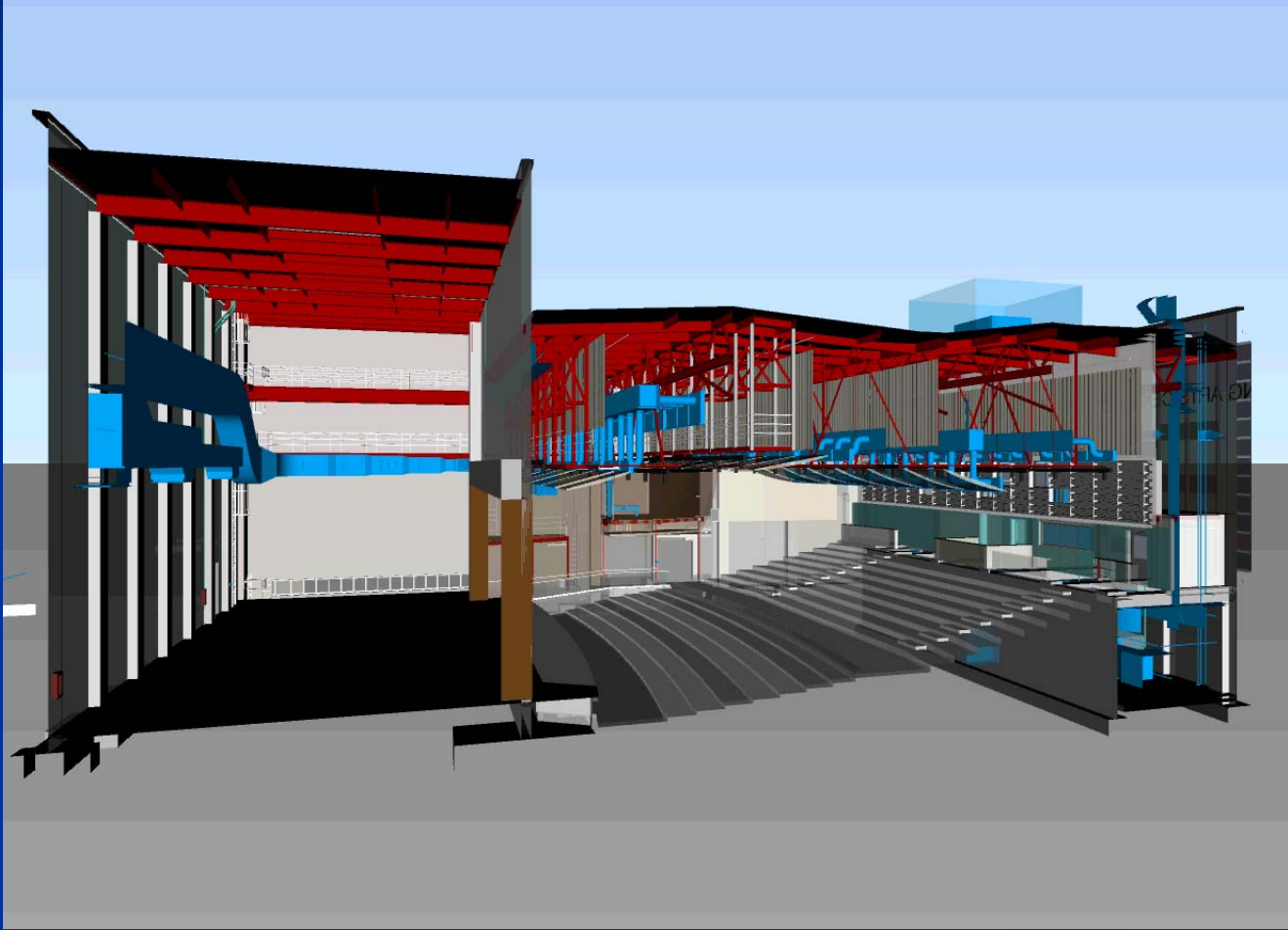
Measure Redline Tags Comments

Steering Wheels Pan Zoom Window Orbit Walk Focus Realism 3Dconnexion



Properties

Item	Element	Element ID
Property	Value	
Name	CSX9	
Type	Composite	
GUID	13949123-40f0-4f57-bcfd-8ac34bbbee96	
Icon	Composite Object	
Hidden	No	
Required	No	
Material	Metal - Steel - ASTM A36	
Source File	2011-0721_EDHS_PAC_Structural.rvt	
Layer	<No level>	





Performing Arts Center – Exterior Perspective

EXTERIOR PERSPECTIVE VIEW



Performing Arts Center – Interior Perspective

An architectural rendering of a performing arts center auditorium. The view is from the back of the theater, looking towards the stage. The ceiling is a complex, multi-level structure with large, square acoustic panels and recessed lighting. The walls are clad in vertical wood slats. The seating is tiered and consists of modern, upholstered chairs. A large, semi-transparent text box is overlaid on the center of the image, containing a quote in blue text.

“The arts are an essential element of education, just like reading, writing, and arithmetic...music, dance, painting, and theater are all keys that unlock profound human understanding and accomplishment.”

– *William Bennett, Former US Secretary of Education*

DISCUSSION